

Model MR1

Multi-Range General Pressure Transducer

The Setra Model MR1 is Setra's newest differential pressure transducer. The Setra MR1 is the ideal product for any contractor, combining the flexibility of a multi-range with the performance of a single range sensor. The MR1 has 8 selectable ranges and 3 selectable outputs, easily adjustable on the job with a flip of a switch or jumper. The MR1 uses an IP67 rated housing and has a conduit fitting for easy wiring, making the MR1 an ideal solution for any general HVAC application.

Universal Design

The Setra MR1 utilizes a universal design that gives the user total flexibility to make changes on the job site. The user has the option to choose the field configurable range, mounting (DIN Rail, wall mount and duct mount), output (mA or Volt) and engineering unit (W.C. or Pascals). This flexibility means that the contractor can use the MR1 for all of their needs.

8 Field Selectable Ranges

The Setra MR1 provides 8 field selectable ranges (0.1, 0.25, 0.5 and 1.0"W.C.). These ranges can be selected on site by flipping to the desired range.

IP67 Rated Housing

The MR1 housing is a robust IP67 rated design and is sealed with a gasket to make it wash-down capable for difficult applications. The MR1 also has a conduit fitting that make installation and wiring easier.

Capacitive Sensing Technology

Only Setra can claim ownership to the stainless steel capacitive design used in all of our HVAC/R sensors. Our advanced capacitive element provides excellent stability and linearity, while standing above the competitors in our ability to measure low pressure (<0.0001"W.C.) at high accuracy. Our technology has been used in over 8 million installations and has the highest field acceptance rate in the industry.

Hochwertige Messtechnik und Beratung aus einer Hand



PCB Synotech GmbH
Porschestra. 20 – 30 ▪ 41836 Hückelhoven
Tel.: +49 (0) 24 33/44 44 40 – 0
E-Mail: info@synotech.de ▪ www.synotech.de



- Universal Design
- IP67 Rated Housing
- Field Selectable

Model MR1 Features:

- Field Configurable Duct Probe
- 4 Digit LCD
- Field Selectable Range
- Field Selectable Output
- Simple 5-Step Setup
- Field Accessible Push-Button Zero & Span
- External Mounting Tabs & Optional DIN Rail
- Unregulated AC/DC Operation

Target Uses:

- Sub-Contractors- Quick Installation
- Flexible for Building Specification Changes
- Service/Retrofit Friendly
- Service Technicians- Quick & Accurate Reconfiguration

Model MR1

Multi-Range General Pressure Transducer



ORDERING INFORMATION

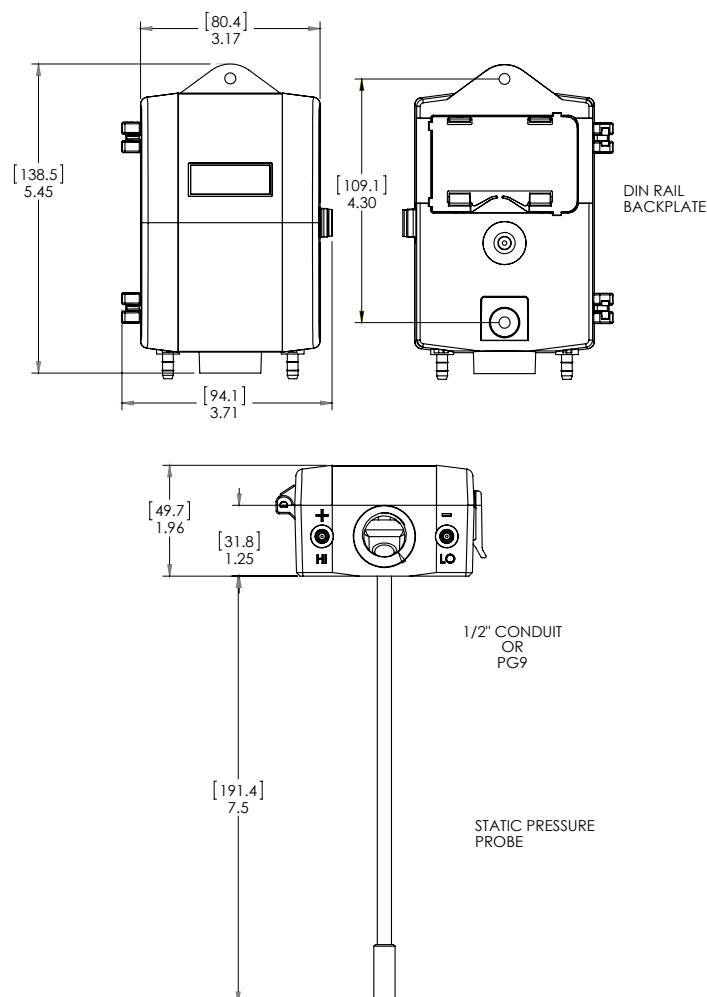
| M | R | - | 1 | - | | - | |
|-------|--------------------------------|--------|-------------------------------|---------|--------------------------|---------|--|
| Model | Field Selectable Ranges | | | | Configuration | Options | |
| MR1 | Unidirectional Pressure Ranges | | Bidirectional Pressure Ranges | | S Standard (Base Mount) | A | 1/2" Conduit |
| | 0.1"W.C. | 25 Pa | ±0.1"W.C. | ±25 Pa | U Universal ¹ | P | PG9 |
| | 0.25"W.C. | 50 Pa | ±0.25"W.C. | ±50 Pa | D DIN Rail | C | 1/2" Conduit W/ Cal Certification ² |
| | 0.5"W.C. | 100 Pa | ±0.5"W.C. | ±100 Pa | P Duct Probe | D | PG9 W/ Cal Certification ² |
| | 1.0"W.C. | 250 Pa | ±1.0"W.C. | ±250 Pa | | | |

¹Code U, Universal unit includes Duct Probe and DIN Rail options.

²Calibration is performed at highest range.

Ordering Example: MR1UA = Model MR1, Universal Configuration, with 1/2" Conduit.

DIMENSIONS



GENERAL SPECIFICATIONS

| Performance Data | | Environmental Data | |
|--|---|---|---|
| | Standard | Operating Temperature ³ | 32 to 122°F (0 to 50°C) |
| Accuracy RSS ¹ (at constant temp) | ±1.0% FS | Electrical Data | |
| Compensated Range °F (°C) | 32 to 122°F (0 to 50°C) | Excitation Range | 13 to 30 VDC/18 to 24 VAC (Voltage Output) 13 to 30 VDC (4 to 20mA output at terminals) |
| Thermal Effects ² %FS/°F(°C) | 0.03 (0.054) | Current Consumption | 30mA (max) |
| Maximum Line Pressure | 10 PSI | Mis-Wiring | Reverse Excitation Protection |
| Overpressure | Up to 10 PSI (range dependent) | Field Selectable Output ⁴ | 0 to 5 V, 0 to 10V (3-wire), 4 to 20mA (2-wire) |
| Long Term Stability (max.) | 2.0% FS/YR | Output Resistance (Voltage Output) | 10 Ohms (max) |
| Position Effect | | Load Resistance (Voltage Output) | 10 K-Ohms (min) |
| Zero Offset %FS/G | 0.5% | Loop Resistance (4-20mA) | 0 to 800 Ohms |
| (Unit is factory calibrated at 0g effect in the vertical position) | | Approval | CE & RoHS Compliant |
| Physical Description | | Pressure Media | |
| Case | Fire-Retardant Polycarbonate (UL 94 V-0 Approved), Hinged Lid | Typically air or similar non-conducting gases. | |
| Mounting | Two Screw Holes Vertical Position | ¹ RSS of Non-Linearity, Hysteresis, and Non-Repeatability. ² Units calibrated at nominal 70°F. Maximum thermal error computed from this datum. | |
| Electrical Connection Block | Removable Screw Terminal | ³ Operating temperature limits of the electronics only. Pressure media temperatures may be considerably higher. | |
| Pressure Fitting | 3/16" O.D. Barbed Brass | ⁴ Calibrated into a 50K ohm load, operable into a 10K ohm load or greater. | |
| Zero | Push Button | ⁵ Span (Full Scale) output factory set to within 1%. | |
| Span | Push Button | ⁶ Calibrated at factory with a 24 VDC loop supply voltage and a 250 ohm load. | |
| Weight (approx.) | 8 Ounces | ⁷ Span (Full Scale) output factory set to within ±0.16mA. | |
| Specifications subject to change without notice. | | | |