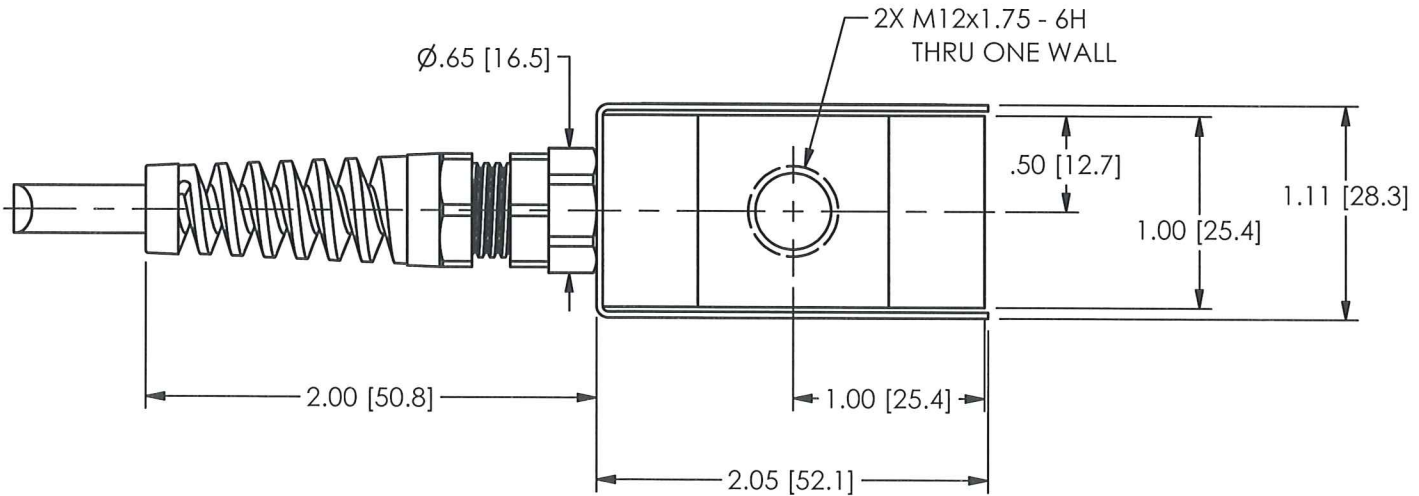
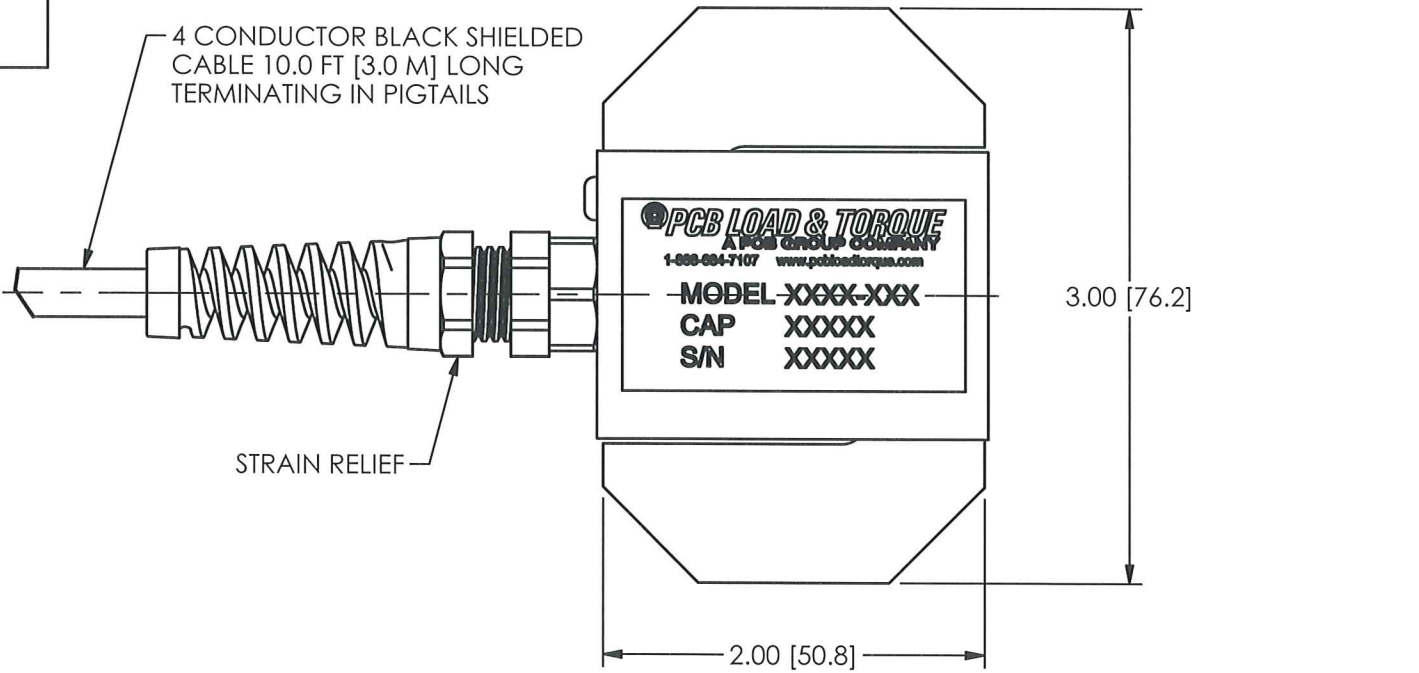


PCB Load & Torque Inc. claims proprietary rights in the information disclosed hereon. Neither it nor any reproduction thereof will be disclosed to others without the written consent of PCB Load and Torque Inc.

REVISIONS

REV	DESCRIPTION	ECO
NR	RELEASED TO DRAFTING	36164

46141



UNLESS OTHERWISE SPECIFIED TOLERANCES ARE:

DIMENSIONS IN INCHES	DIMENSIONS IN MILLIMETERS [IN BRACKETS]
DECIMALS XX ±.01 XXX ±.005	DECIMALS X ± 0.3 XX ± 0.13
ANGLES ± .5 DEGREES	ANGLES ± .5 DEGREES
FILLETS AND RADII .015 MAX	FILLETS AND RADII 0.38 MAX

DRAWN	CHECKED	ENGINEER
<i>MTS</i>	<i>6/28/11</i>	JAM 6/28/11

TITLE  
OUTLINE DRAWING  
MODEL 1631 SERIES  
S-CELL

**PCB LOAD & TORQUE**  
A PCB GROUP COMPANY

24350 Indoplex Circle, Farmington Hills, MI 48335  
(716) 684-0001 E-MAIL: [llinfo@pcbloadtorque.com](mailto:llinfo@pcbloadtorque.com)

DWG. NO. **46141**

SCALE: FULL SHEET 1 OF 1