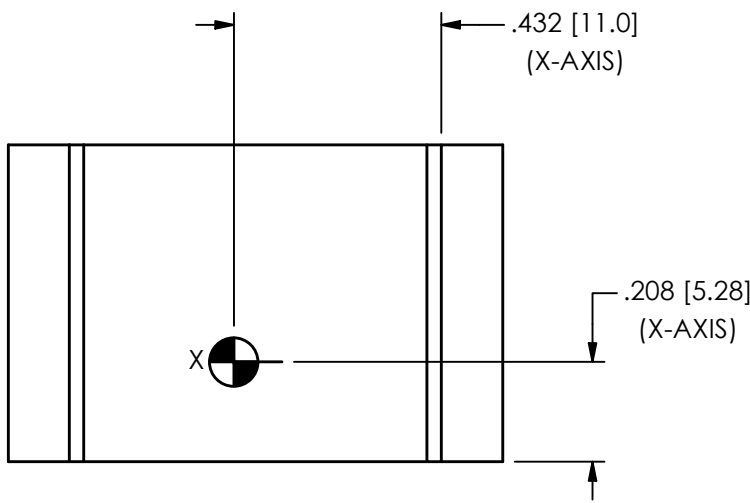
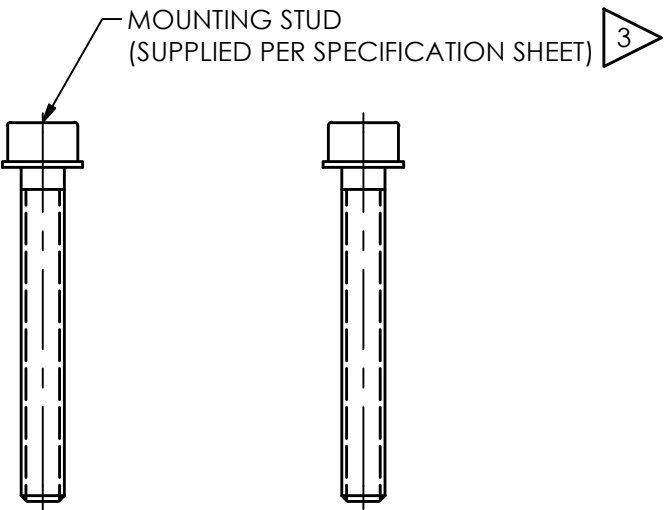


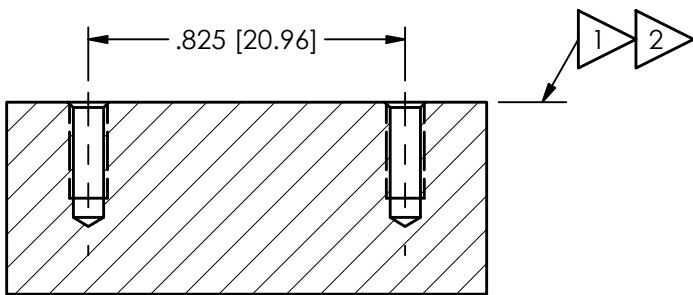
REV	DESCRIPTION	DIN
NR	RELEASED TO DRAFTING	55341


A

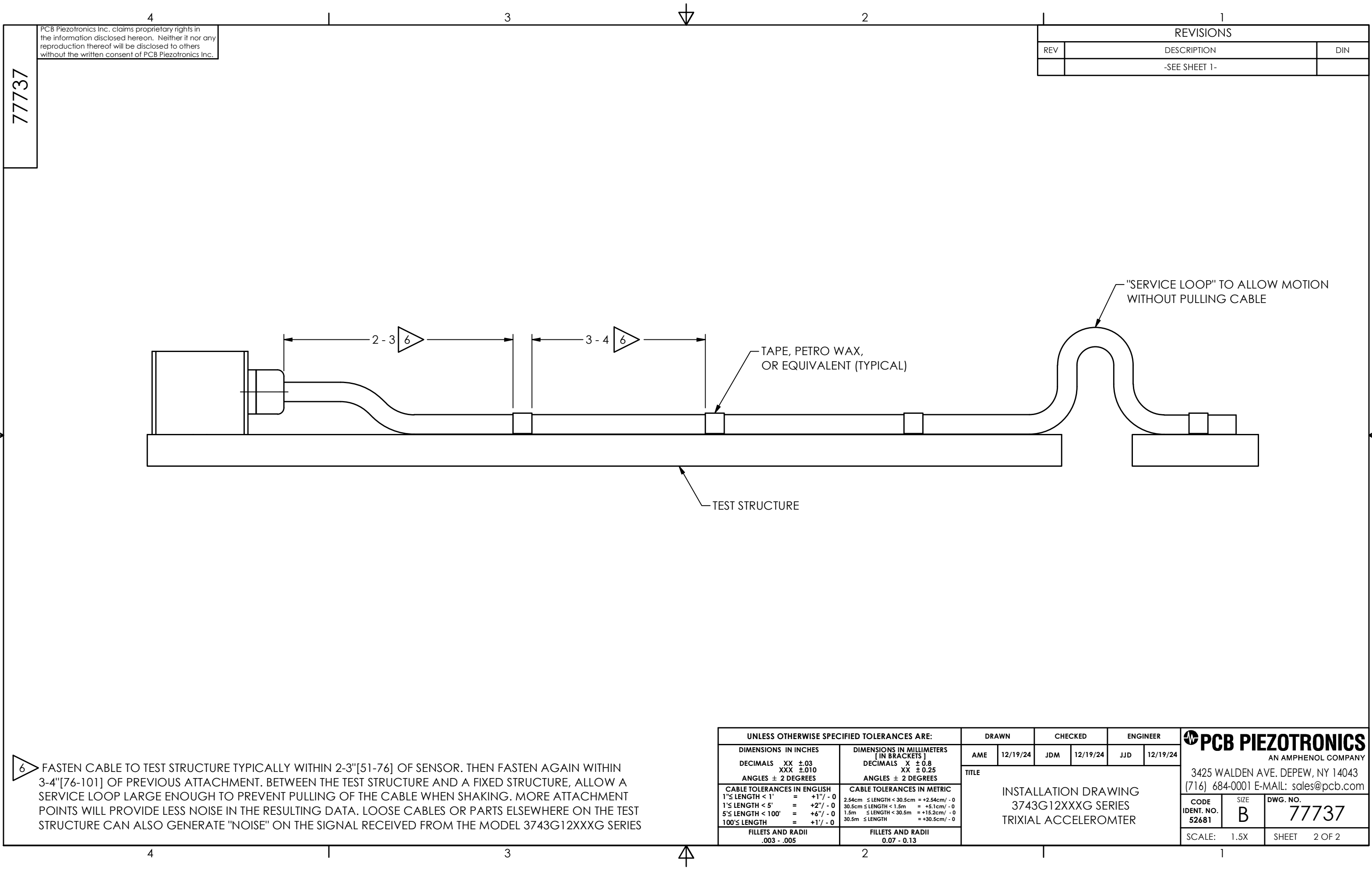


Pin Number	Color
1	ORANGE
2	GREEN
3	WHITE
4	RED
5	PURPLE
6	BROWN
7	BLACK
8	BLUE
9	YELLOW
10	GRAY
11	BARE
12	BARE
13	BARE
14	BARE
15	BARE

MOUNTING HOLE PREPARATION:
 Ø.089 [2.26] ▽ .280 [7.11] MIN
 4-40 UNC-2B ▽ .230 [5.84] MIN




- | | | | | | | | | | | | | | | | |
|---|--|---|-------|-------|---------|---|----------|-----|--|----------|--|--------------------------------------|--|----------|--|
| UNLESS OTHERWISE SPECIFIED TOLERANCES ARE: | | | DRAWN | | CHECKED | | ENGINEER | |  PCB PIEZOTRONICS
AN AMPHENOL COMPANY | | | | | | |
| DIMENSIONS IN INCHES | | DIMENSIONS IN MILLIMETERS
[IN BRACKETS] | | AME | | 12/19/24 | | JDM | | 12/19/24 | | JJD | | 12/19/24 | |
| DECIMALS .XX ±.03
XXX ±.010 | | DECIMALS .X ±.06
XXX ±.025 | | TITLE | | INSTALLATION DRAWING
3743G12XXXG SERIES
TRIXIAL ACCELEROMETER | | | | | | CODE | | SIZE | |
| ANGLES ± 2 DEGREES | | ANGLES ± 2 DEGREES | | | | | | | | | | IDEN. NO.
52681 | | C 77737 | |
| CABLE TOLERANCES IN ENGLISH
1" LENGTH < 1' = +7/-0
1" LENGTH < 5' = +27/-0
5" LENGTH < 100' = +67/-0
100' LENGTH = +17/-0 | | CABLE TOLERANCES IN METRIC
25.4cm ± LENGTH < 30.5cm = +25.4cm/-0
30.5cm ± LENGTH < 1.5m = +15.2cm/-0
1.5m ± LENGTH < 30.5m = +15.2cm/-0
30.5m ± LENGTH < 30.5m = +30.5cm/-0 | | | | | | | | | | DWG. NO.
SCALE: 2.5X SHEET 1 OF 2 | | | |
| FILLETS AND RADII
.003 - .005 | | FILLETS AND RADII
0.07 - 0.13 | | | | | | | | | | | | | |



PCB Piezotronics Inc. claims proprietary rights in the information disclosed hereon. Neither it nor any reproduction thereof will be disclosed to others without the written consent of PCB Piezotronics Inc.

REVISIONS		
REV	DESCRIPTION	DIN
	-SEE SHEET 1-	

FASTEN CABLE TO TEST STRUCTURE TYPICALLY WITHIN 2-3"[51-76] OF SENSOR. THEN FASTEN AGAIN WITHIN 3-4"[76-101] OF PREVIOUS ATTACHMENT. BETWEEN THE TEST STRUCTURE AND A FIXED STRUCTURE, ALLOW A SERVICE LOOP LARGE ENOUGH TO PREVENT PULLING OF THE CABLE WHEN SHAKING. MORE ATTACHMENT POINTS WILL PROVIDE LESS NOISE IN THE RESULTING DATA. LOOSE CABLES OR PARTS ELSEWHERE ON THE TEST STRUCTURE CAN ALSO GENERATE "NOISE" ON THE SIGNAL RECEIVED FROM THE MODEL 3743G12XXXG SERIES

UNLESS OTHERWISE SPECIFIED TOLERANCES ARE:		DRAWN		CHECKED		ENGINEER		 PCB PIEZOTRONICS AN AMPHENOL COMPANY		
DIMENSIONS IN INCHES	DIMENSIONS IN MILLIMETERS (IN BRACKETS)	AME	12/19/24	JDM	12/19/24	JJD	12/19/24	3425 WALDEN AVE. DEPEW, NY 14043 (716) 684-0001 E-MAIL: sales@pcb.com		
DECIMALS XX ±.03 XXX ±.010	DECIMALS X ± 0.8 XX ± 0.25	TITLE INSTALLATION DRAWING 3743G12XXXG SERIES TRIXIAL ACCELEROMETER						CODE IDENT. NO. 52681	SIZE B	DWG. NO. 77737
ANGLES ± 2 DEGREES	ANGLES ± 2 DEGREES							SCALE: 1.5X	SHEET 2 OF 2	
CABLE TOLERANCES IN ENGLISH 1"≤ LENGTH < 1' = +1"/ - 0 1'≤ LENGTH < 5' = +2"/ - 0 5'≤ LENGTH < 100' = +6"/ - 0 100'≤ LENGTH = +1'/ - 0	CABLE TOLERANCES IN METRIC 2.54cm ≤ LENGTH < 30.5cm = +2.54cm/ - 0 30.5cm ≤ LENGTH < 1.5m = +5.1cm/ - 0 1.5m ≤ LENGTH < 30.5m = +15.2cm/ - 0 30.5m ≤ LENGTH = +30.5cm/ - 0									
FILLETS AND RADII .003 - .005	FILLETS AND RADII 0.07 - 0.13									