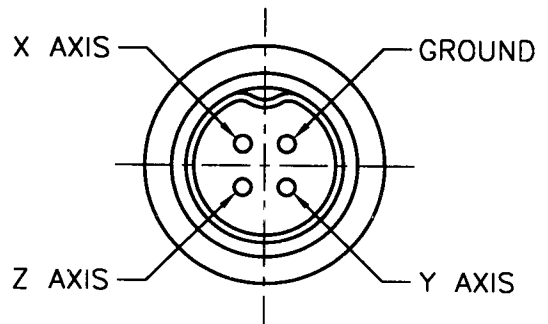
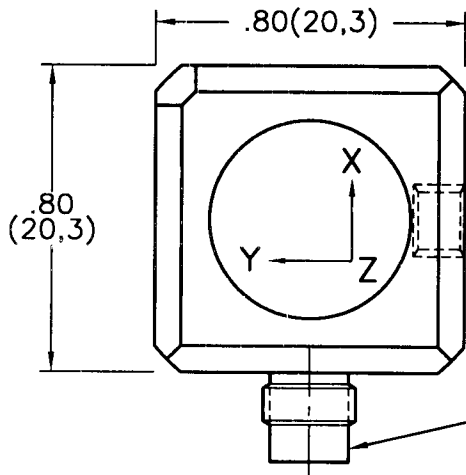


11839

PCB Piezotronics Inc. claims proprietary rights in the information disclosed herein. Neither it nor any reproduction thereof will be disclosed to others without written consent of PCB Piezotronics Inc.

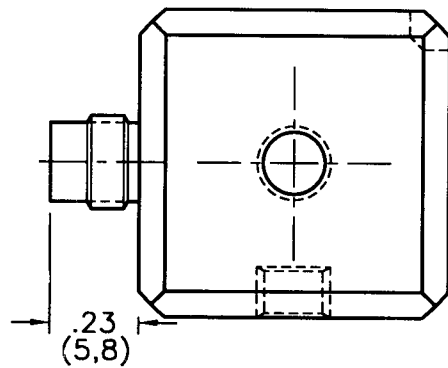
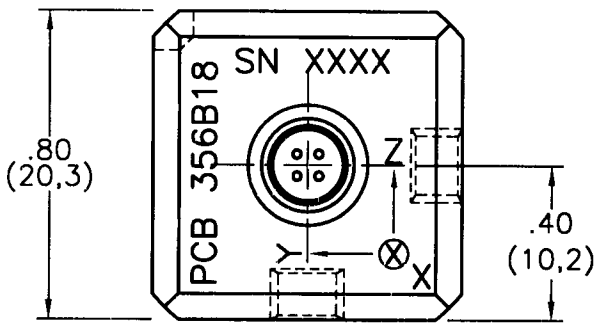
APPLICATION		
NEXT ASS'Y	USED ON	VAR

REVISIONS				
REV	DESCRIPTION	ECN	DATE	APP'D



CONNECTOR PIN DESIGNATION
(SCALE: 4X)

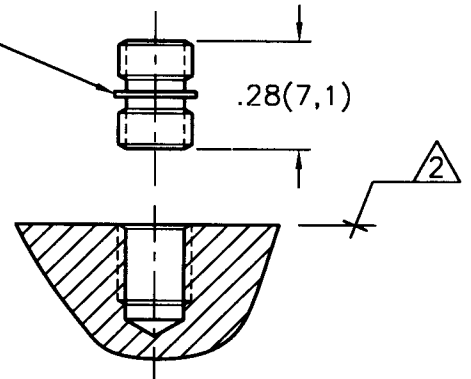
1/4-28
4 PIN HERMETIC
CONNECTOR



MOUNTING HOLE PREPARATION:

- Ø.159 (Ø4,04) 1
- X .28 (7,1) ↓ MIN.
- TAP 10-32 UNF-2B
- X .20 (5,1) ↓ MIN.

MODEL 081B05
MOUNTING STUD
10-32 UNF-2A
TYPICAL EACH END
(SUPPLIED)



- 4.) UNIT IS ANODIZED - GOLD COLOR
- 3.) RECOMMENDED MOUNTING TORQUE ON .80(20,3) CUBE 10-20 INCH POUNDS (113-225 NEWTON CENTIMETERS).
- 2 RECOMMENDED MOUNTING SURFACE SHOULD BE FLAT TO WITHIN .003 (0.08) TIR OVER Ø1.100 (Ø27.94) WITH A 32/ (0.8/) FINISH FOR BEST RESULTS.
- 1 DRILL PERPENDICULAR TO MOUNTING SURFACE TO WITHIN ±1°.

UNLESS SPECIFIED TOLERANCES		DRAWN	CHK'D	APP'D	TITLE	PCB PIEZOTRONICS™	
DIMENSIONS IN INCHES	DIMENSIONS IN MILLIMETERS (IN PARENTHESIS)	SLM 10/8/99	SM 10/11/99	SL 10/11/99	INSTALLATION DRAWING MODEL 356B18 TRIAxIAL ACCELEROMETER	3425 WALDEN AVE. DEPEW, NY 14043 (716) 684-0001 EMAIL: SALES@PCB.COM	
DECIMALS XX ±.01 XXX ±.005	DECIMALS XX ±0.3 XXX ±0.13					CODE IDENT. NO. 52681	DWG. NO. 11839
ANGLES ±2 DEGREES	ANGLES ±2 DEGREES					SCALE: 2 X	SHEET 1 OF 1
FILLETS AND RADII .003 - .005	FILLETS AND RADII (0.07 - 0.13)						
DD011 REV. B 03/13/98							