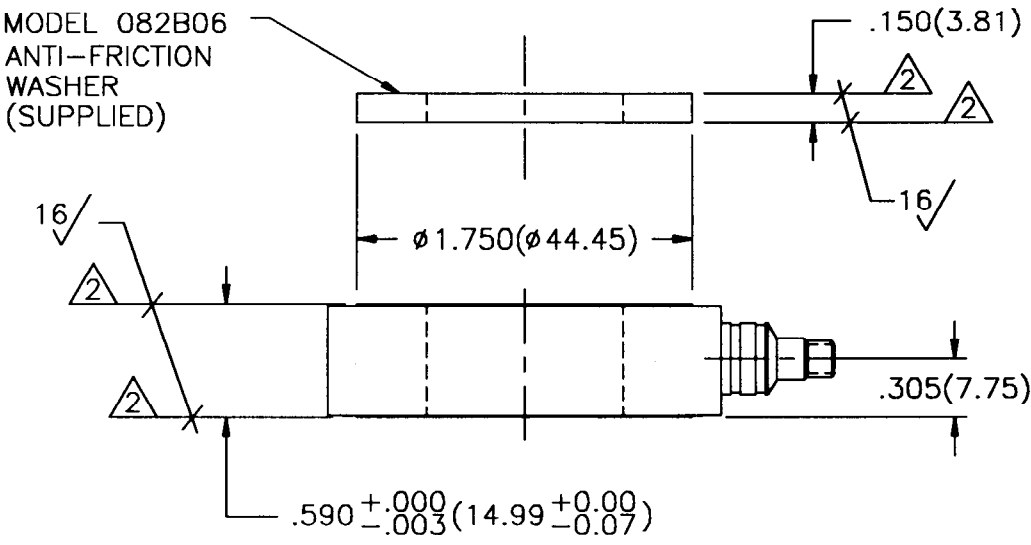
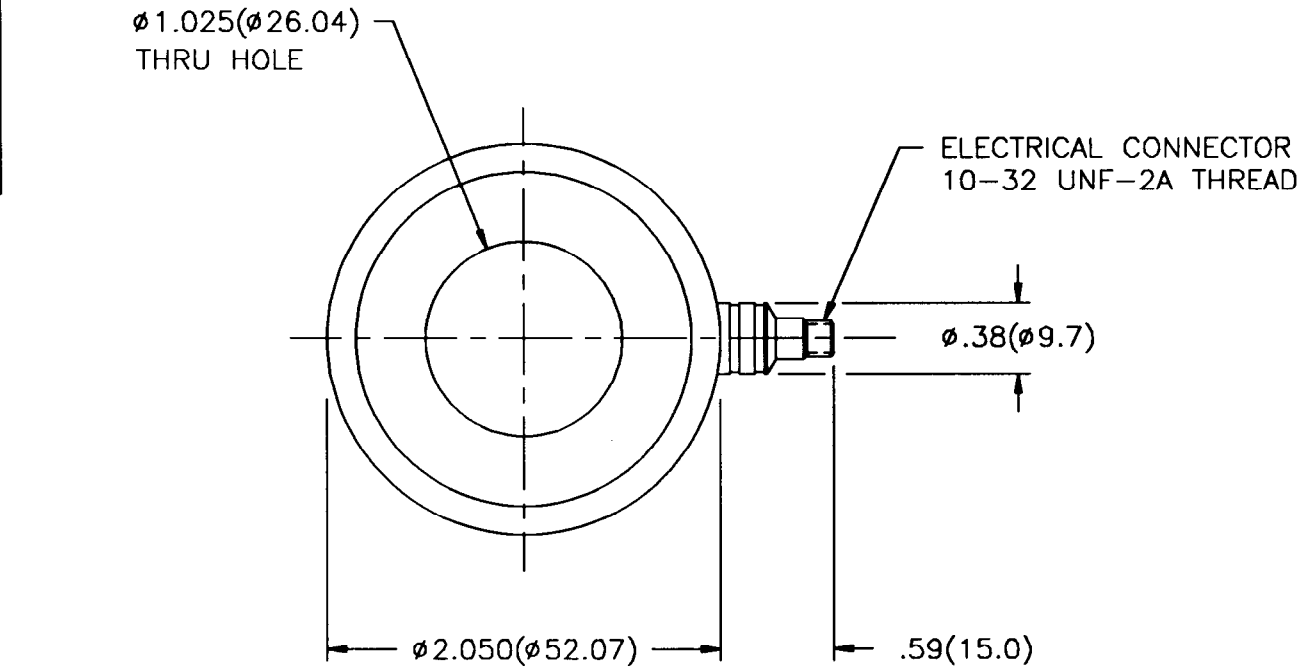


216-2010-90

APPLICATION		
NEXT ASS'Y	USED ON	VAR

REVISIONS				
REV	DESCRIPTION	ECN	DATE	APP'D



THESE SURFACES TO BE FLAT AND PARALLEL TO WITHIN .001(0.03) TIR.

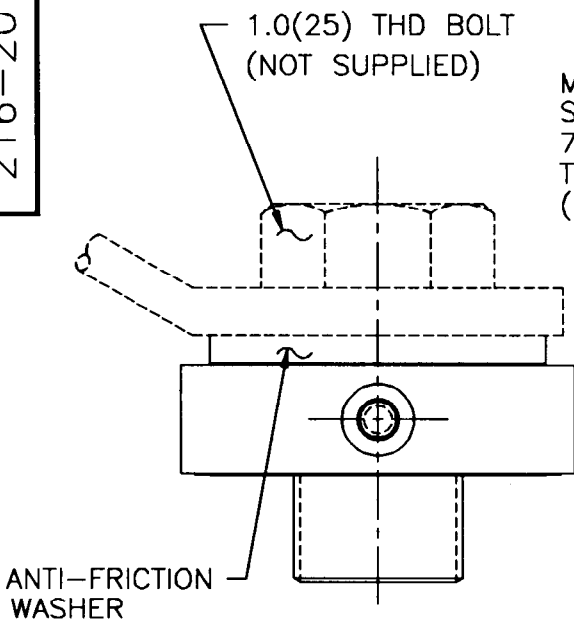
1.) SEE SHEET TWO FOR MOUNTING INSTRUCTIONS.

UNLESS SPECIFIED TOLERANCES		DRAWN	AMP	DESIGN	MFG	RTA	1/31/94	PCB PIEZOTRONICS, INC. 3425 WALDEN AVE. DEPEW, NEW YORK 14043 PHONE: (716) 684-0001
DIMENSIONS IN INCHES	DIMENSIONS IN MILLIMETERS (IN PARENTHESIS)	CHK'D	DM	1/27/94	ENGR		1/31/94	
DECIMALS XX ±.01	DECIMALS X ±0.3	APP'D	SGC	1/31/94	1	EDV	2-1-94	
XXX ±.005	XX ±0.13	TITLE		INSTALLATION DRAWING		CODE	DWG. NO.	
ANGLES ±2 DEGREES	ANGLES ±2 DEGREES	FILLETS AND RADII .003 - .005 (0.07 - 0.13)		MODEL 216B		IDENT. NO.	216-2010-90	
				FORCE RING		52681		SCALE: FULL
								SHEET 1 OF 2

216-2010-90

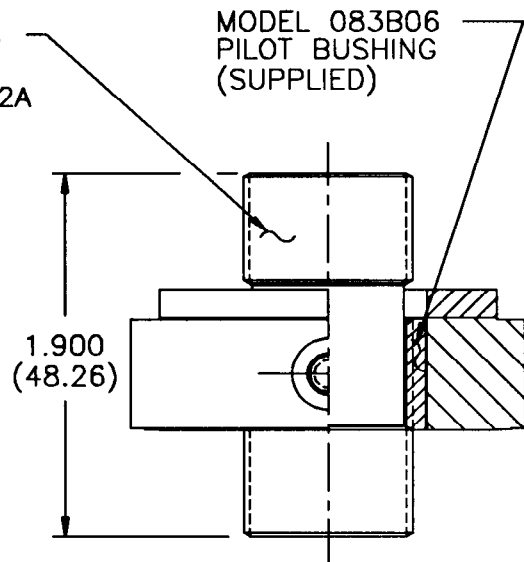
APPLICATION		
NEXT ASS'Y	USED ON	VAR

REVISIONS				
REV	DESCRIPTION	ECN	DATE	APP'D



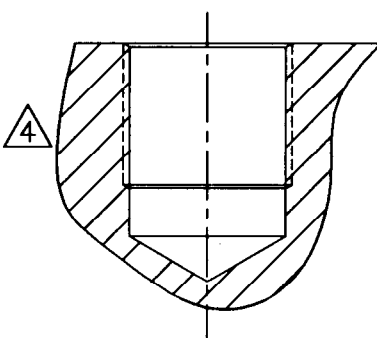
TYP BOLT MOUNTING
INSTALLATION

MODEL 081A16
STUD
7/8-14 UNF-2A
TYP EACH END
(SUPPLIED)

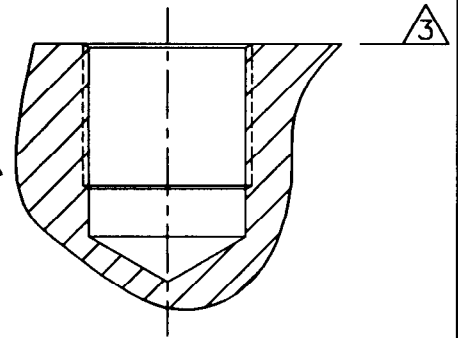


TYP STUD MOUNTING
INSTALLATION

DRILL & TAP
AS REQUIRED
FOR 1.0(25)
THD BOLT



DRILL $\phi .812(\phi 20.62)$
X 1.00(25.4) \downarrow
TAP 7/8-14 UNF-2B
X .750(19.05) \downarrow
PERFECT THREAD



5.) SEE MANUAL FOR PRELOAD INSTRUCTIONS.

$\triangle 4$ DRILL PERPENDICULAR TO MOUNTING SURFACE TO WITHIN $\pm .001^\circ$.

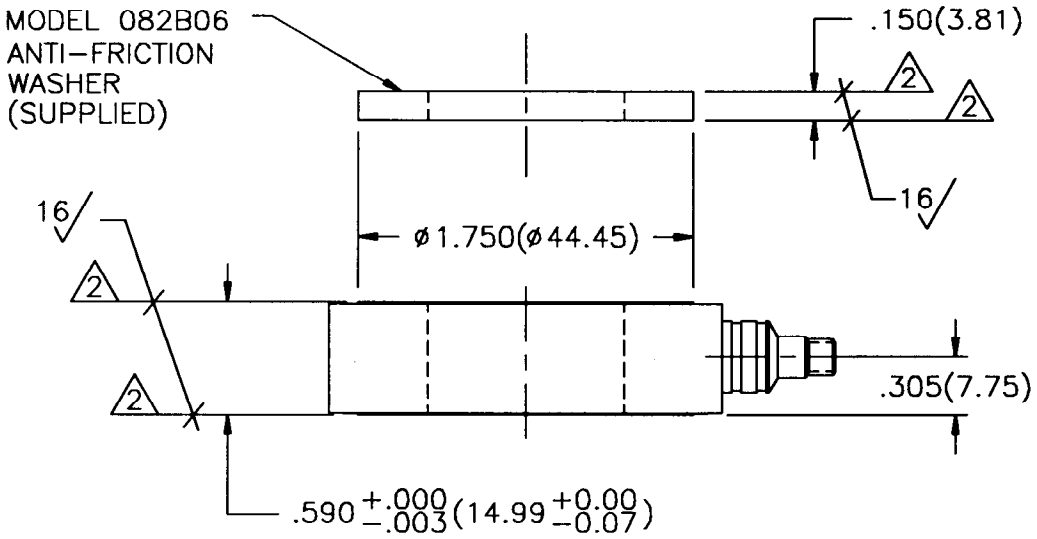
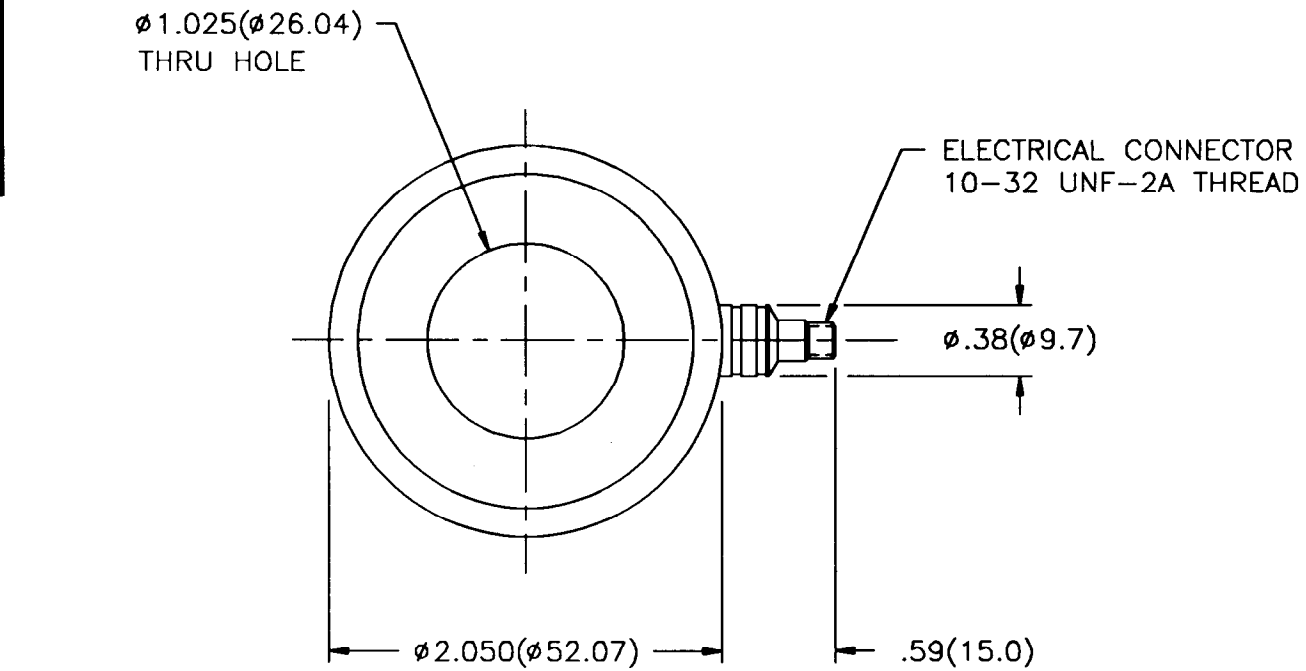
$\triangle 3$ MOUNTING SURFACE UNDER FORCE RING MUST BE FLAT WITHIN
.001(0.03) TIR WITH A 63/ (1.6/) FINISH.

UNLESS SPECIFIED TOLERANCES		DRAWN	CMD	1/23/94	MFG	RJA	1/31/94	PCB PIEZOTRONICS, INC. 3425 WALDEN AVE. DEPEW, NEW YORK 14043 PHONE: (716) 684-0001
DIMENSIONS IN INCHES	DIMENSIONS IN MILLIMETERS (IN PARENTHESIS)	CHK'D	JM	1/27/94	ENGR		1/28/94	
DECIMALS XX $\pm .01$ XXX $\pm .005$ ANGLES ± 2 DEGREES	DECIMALS X ± 0.3 XX ± 0.13 ANGLES ± 2 DEGREES	APP'D	SGC	1/31/94			2-1-94	
FILLETS AND RADII .003 - .005 (0.07 - 0.13)	TITLE		INSTALLATION DRAWING MODEL 216B FORCE RING				CODE IDENT. NO. 52681	DWG. NO. 216-2010-90
		SCALE: FULL		SHEET 2 OF 2				

216-2010-90

APPLICATION		
NEXT ASS'Y	USED ON	VAR

REVISIONS				
REV	DESCRIPTION	ECN	DATE	APP'D



△ THESE SURFACES TO BE FLAT AND PARALLEL TO WITHIN .001(0.03) TIR.

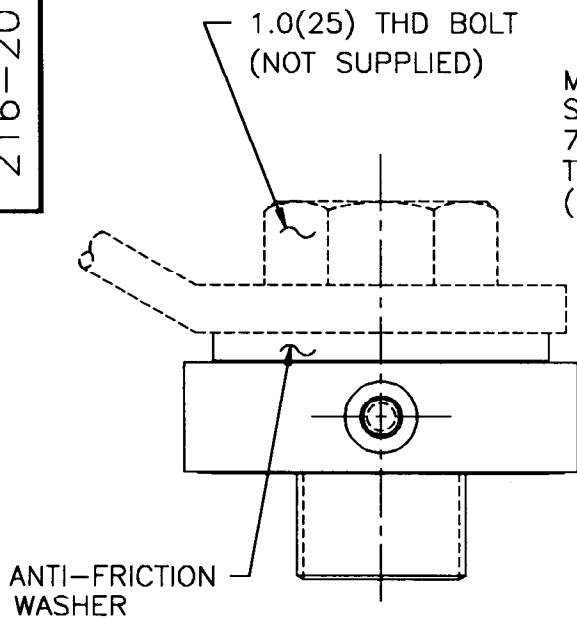
1.) SEE SHEET TWO FOR MOUNTING INSTRUCTIONS.

UNLESS SPECIFIED TOLERANCES		DRAWN	RMP	DESIGN	MFG	RJA	1/31/74	PCB PIEZOTRONICS, INC. 3425 WALDEN AVE. DEPEW, NEW YORK 14043 PHONE: (716) 684-0001
DIMENSIONS IN INCHES	DIMENSIONS IN MILLIMETERS (IN PARENTHESIS)	CHK'D	DM	1/27/74	ENGR	ECO	1/30/74	
DECIMALS XX ± .01 XXX ± .005	DECIMALS X ± 0.3 XX ± 0.13	APP'D	SGC	1/31/74	1	RJV	2-1-74	
ANGLES ± 2 DEGREES	ANGLES ± 2 DEGREES	TITLE						CODE IDENT. NO.
FILLETS AND RADII .003 - .005 (0.07 - 0.13)	INSTALLATION DRAWING MODEL 216B FORCE RING						52681	DWG. NO. 216-2010-90
SCALE: FULL							SHEET 1 OF 2	

216-2010-90

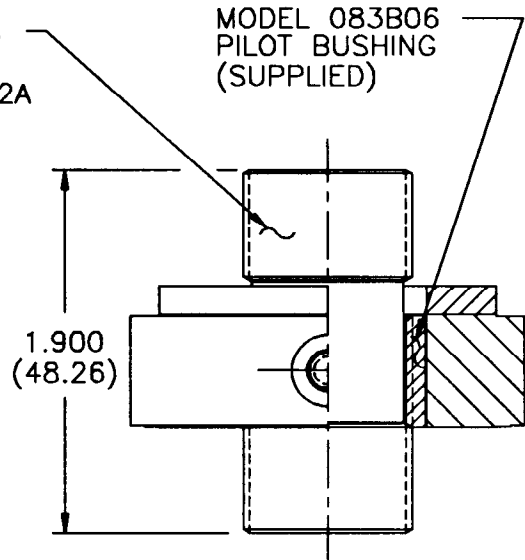
APPLICATION		
NEXT ASS'Y	USED ON	VAR

REVISIONS				
REV	DESCRIPTION	ECN	DATE	APP'D



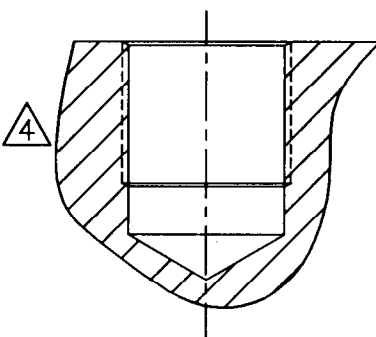
TYP BOLT MOUNTING
INSTALLATION

MODEL 081A16
STUD
7/8-14 UNF-2A
TYP EACH END
(SUPPLIED)

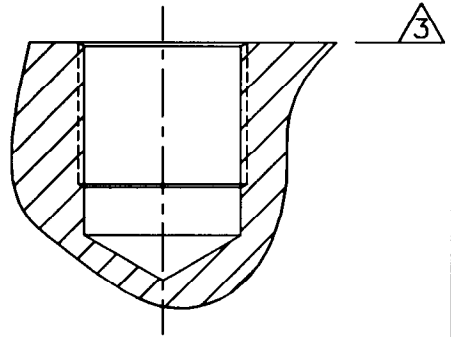


TYP STUD MOUNTING
INSTALLATION

DRILL & TAP
AS REQUIRED
FOR 1.0(25)
THD BOLT



DRILL $\phi .812(\phi 20.62)$
X 1.00(25.4) ∇
TAP 7/8-14 UNF-2B
X .750(19.05) ∇
PERFECT THREAD



5.) SEE MANUAL FOR PRELOAD INSTRUCTIONS.

$\nabla 4$ DRILL PERPENDICULAR TO MOUNTING SURFACE TO WITHIN $\pm .001^{\circ}$.

$\nabla 3$ MOUNTING SURFACE UNDER FORCE RING MUST BE FLAT WITHIN
.001(0.03) TIR WITH A $63\sqrt{}$ (1.6 $\sqrt{}$) FINISH.

UNLESS SPECIFIED TOLERANCES

DIMENSIONS IN INCHES

DECIMALS XX $\pm .01$
XXX $\pm .005$
ANGLES ± 2 DEGREES

DIMENSIONS IN MILLIMETERS
(IN PARENTHESIS)

DECIMALS X ± 0.3
XX ± 0.13
ANGLES ± 2 DEGREES

FILLETS AND RADII .003 - .005 (0.07 - 0.13)

DRAWN	CMD	1/23/94	MFG	R74	1/31/94
CHK'D	DM	1/27/94	ENGR	[Signature]	1/28/94
APP'D	SGC	1/31/94		[Signature]	2-1-94

TITLE
INSTALLATION DRAWING
MODEL 216B
FORCE RING

PCB PIEZOTRONICS, INC.
3425 WALDEN AVE. DEPEW, NEW YORK 14043
PHONE: (716) 684-0001

CODE
IDENT. NO.
52681

DWG. NO.
216-2010-90

SCALE: FULL SHEET 2 OF 2