

19229

PCB Piezotronics Inc. claims proprietary rights in the information disclosed hereon. Neither it nor any reproduction thereof will be disclosed to others without written consent of PCB Piezotronics Inc.

APPLICATION

NEXT ASS'Y	USED ON	VAR

REVISIONS

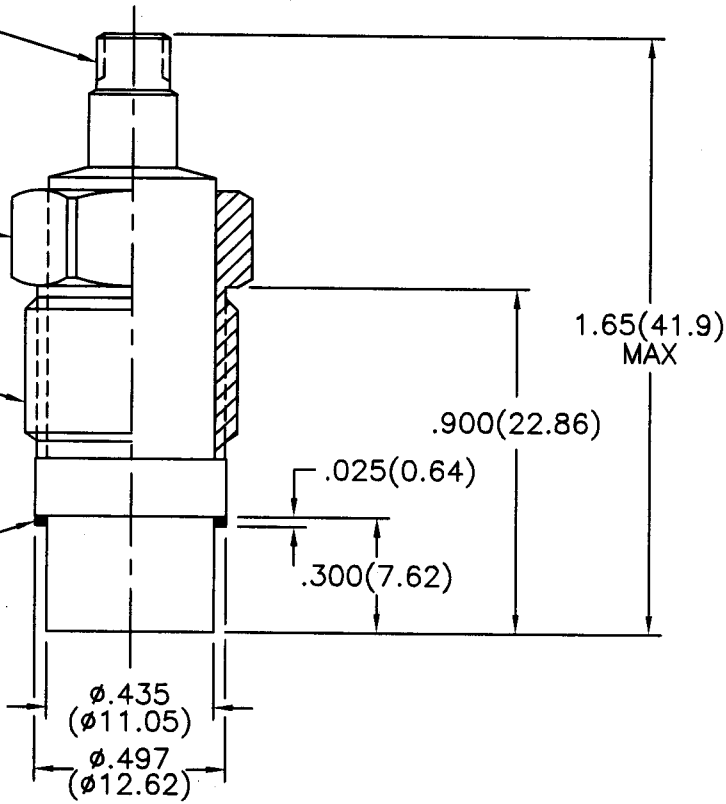
REV	DESCRIPTION	ECN	DATE	APP'D
A	METRIC TOLERANCE CORRECTION	16610	12/13/02	DM12/02

ELECTRICAL CONNECTOR  
CO-AXIAL 10-32 UNF-2A

MODEL 060A12  
CLAMP NUT 9/16 HEX  
ST STL (SUPPLIED)  $\triangle 3$

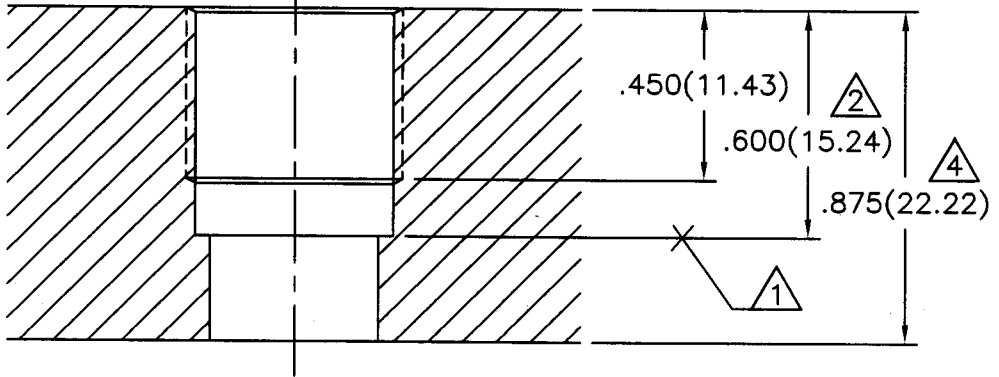
9/16-18 UNF-2A

MODEL 065A37  
SEAL .025(0.64) THICK  
BRASS (SUPPLIED)  $\triangle 1$



MOUNTING HOLE PREPARATION:

- $\phi .437(\phi 11.10)$   
THRU
- $\square \phi .515(\phi 13.08)$
- X .600(15.24)  $\nabla$
- TAP 9/16-18 UNF-2B
- X .450(11.43)  $\nabla$



- $\triangle 4$  DIMENSIONS SHOWN ARE FOR .875(22.22) THICK WALL,  $\square$  FOR THICKER WALLS.
- $\triangle 3$  RECOMMENDED MOUNTING TORQUE ON 9/16 HEX  
5.0 - 6.0 FOOT POUNDS(7 - 8 NEWTON METERS).
- $\triangle 2$  DRILL PERPENDICULAR TO MOUNTING SURFACE TO WITHIN  $\pm 1^\circ$
- $\triangle 1$  SEAL SURFACE MUST BE FLAT AND FREE OF TOOL  
MARKS WITH A MINIMUM FINISH OF 63/ (1.6 /).

UNLESS SPECIFIED TOLERANCES		DRAWN	JDM	12-13-02	MFG	JBS	12/19/02	 3425 WALDEN AVE. DEPEW, NY 14043 (716) 684-0001 EMAIL: SALES@PCB.COM
DIMENSIONS IN INCHES	DIMENSIONS IN MILLIMETERS (IN PARENTHESIS)	CHK'D	DM	12/17/02	ENGR	WJH	12/16/02	
DECIMALS XX $\pm .01$ XXX $\pm .005$	DECIMALS X $\pm 0.3$ XX $\pm 0.13$	APP'D	FEV	12/26/02	SALES	Jmm	12/19/02	
ANGLES $\pm 2$ DEGREES	ANGLES $\pm 2$ DEGREES	TITLE	INSTALLATION DRAWING MODEL 116B03 PRESSURE SENSOR				CODE IDENT. NO. 52681	
FILLET AND RADII .003 - .005	FILLET AND RADII (0.07 - 0.13)							DWG. NO. 19229
DD011 REV. B 03/13/98								SCALE: 2X SHEET 1 OF 1