

11563

PCB Piezotronics Inc. claims proprietary rights in the information disclosed hereon. Neither it nor any reproduction thereof will be disclosed to others without written consent of PCB Piezotronics Inc.

APPLICATION		
NEXT ASS'Y	USED ON	VAR

REVISIONS				
REV	DESCRIPTION	ECN	DATE	APP'D

ELECTRICAL CONNECTOR
COAXIAL 5-44 UNF-2A

④ .156(4.00) HEX

10-32 UNF-2A

MODEL 065A10 SEAL
.022(.56) THICK
MATERIAL: BRASS
(SUPPLIED)

$.099^{+.000}_{-.001}$ (2.51 $^{+0.00}_{-0.03}$)
 $.140^{+.000}_{-.001}$ (3.57 $^{+0.00}_{-0.03}$)

.11(2.8)

∅.190(∅4.83)

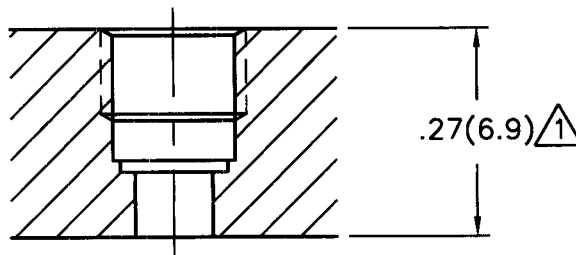
.90(22.9)

.27(6.9)

$.100^{+.000}_{-.001}$ (2.54 $^{+0.00}_{-0.03}$)

MOUNTING HOLE PREPARATION:

- ∅.101(∅2.57) THRU ③
- └ ∅.140(∅3.57) ③
- X $.190^{+.000}_{-.005}$ (4.83 $^{+0.00}_{-0.13}$) ∇ ②
- └ ∅.159(∅4.04)
- X $.175^{+.000}_{-.005}$ (4.45 $^{+0.00}_{-0.13}$) ∇
- TAP 10-32 UNF-2B
- X .110(2.79) ∇ PERF. THD.



FLUSH MOUNT

- ④ RECOMMENED MOUNTING TORQUE ON .156(4.00) HEX TO BE 15 INCH LBS.(169 Ncm)
- ③ THESE DIAMETERS MUST BE CONCENTRIC TO WITHIN .001(0.03) TIR
- ② SEAL SURFACES MUST BE FLAT AND FREE OF TOOL MARKS WITH A MIN. 63√(1.6√) FINISH
- ① FOR INSTALLATIONS DEEPER THAN .27(6.9) └ ∅.250(∅6.35) TO CLEAR BODY

UNLESS SPECIFIED TOLERANCES		DRAWN	MDD	5/14/99	MFG	JRS	9/14/99	 3425 WALDEN AVE. DEPEW, NY 14043 (716) 684-0001 EMAIL: SALES@PCB.COM	
DIMENSIONS IN INCHES	DIMENSIONS IN MILLIMETERS (IN PARENTHESIS)	CHK'D	Bm	9/14/99	ENGR	ACT	9-15-99		
DECIMALS XX ±.01 XXX ±.005	DECIMALS XX ±0.3 XXX ±0.13	APP'D	WSH	9/22/99	Sales	RAA	9/22/99		
ANGLES ±2 DEGREES	ANGLES ±2 DEGREES	TITLE	INSTALLATION DRAWING MODEL 105C22 PRESSURE SENSOR					CODE IDENT. NO. 52681	DWG. NO. 11563
FILLETS AND RADII .003 - .005	FILLETS AND RADII (0.07 - 0.13)	DD011 REV. B 03/13/98		SCALE: 4X				SHEET 1 OF 2	

11563

PCB Piezotronics Inc. claims proprietary rights in the information disclosed hereon. Neither it nor any reproduction thereof will be disclosed to others without written consent of PCB Piezotronics Inc.

APPLICATION		
NEXT ASS'Y	USED ON	VAR

REVISIONS				
REV	DESCRIPTION	ECN	DATE	APP'D

ELECTRICAL CONNECTOR
COAXIAL 5-44 UNF-2A

4 .156(4.00) HEX

10-32 UNF-2A

MODEL 065A38 SEAL
.105(2.67) THICK
MATERIAL: BRASS
(OPTIONAL)

.099^{+0.000}_{-.001} (2.51^{+0.00}_{-0.03})

.140^{+0.000}_{-.001} (3.57^{+0.00}_{-0.03})

.11(2.8)

∅.190(∅4.83)

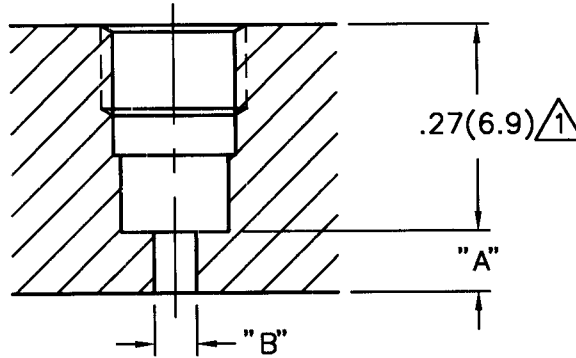
.90(22.7)

.27(6.9)

.100^{+0.000}_{-.001} (2.54^{+0.00}_{-0.03})

MOUNTING HOLE PREPARATION:

- ∅.140(∅3.57) 3
- X .270(6.86) 2
- ∅.159(∅4.04) 3
- X .200(5.08) 2
- TAP 10-32 UNF-2B
- X .110(2.79) 2 PERF. THD.



RECESS MOUNT

5.) DIMENSIONS "A" & "B" TO SUIT
USERS REQUIREMENTS

- 4 RECOMMENED MOUNTING TORQUE ON .156(4.00) HEX TO BE 15 INCH LBS.(169 Ncm)
- 3 THESE DIAMETERS MUST BE CONCENTRIC TO WITHIN .001(0.03) TIR
- 2 SEAL SURFACES MUST BE FLAT AND FREE OF TOOL MARKS WITH A MIN. 63√(1.6√) FINISH
- 1 FOR INSTALLATIONS DEEPER THAN .27(6.9) □ ∅.250(∅6.35) TO CLEAR BODY

UNLESS SPECIFIED TOLERANCES		DRAWN	MFG	PCB PIEZOTRONICS™		
DIMENSIONS IN INCHES	DIMENSIONS IN MILLIMETERS (IN PARENTHESIS)	MOD 9/14/99	JBS 9/14/99	3425 WALDEN AVE. DEPEW, NY 14043		
DECIMALS XX ± .01	DECIMALS XX ± 0.3	CHK'D	ENGR	(716) 684-0001 EMAIL: SALES@PCB.COM		
XXX ± .005	XXX ± 0.13	APP'D		CODE	DWG. NO.	
ANGLES ± 2 DEGREES	ANGLES ± 2 DEGREES	WSH 9/22/99	S200	52681	11563	
FILLETS AND RADII .003 - .005	FILLETS AND RADII (0.07 - 0.13)	TITLE			SCALE: 4X	SHEET 2 OF 2
DD011 REV. B 03/13/98		INSTALLATION DRAWING MODEL 105C22 PRESSURE SENSOR				