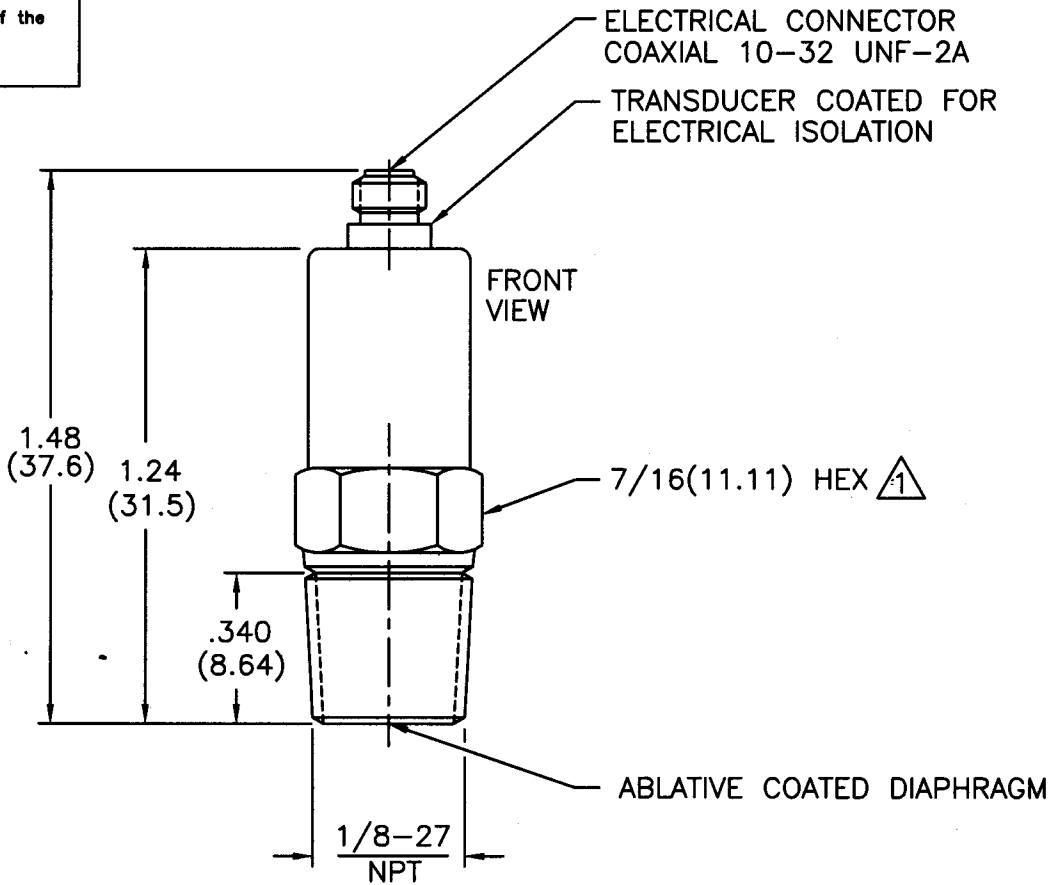


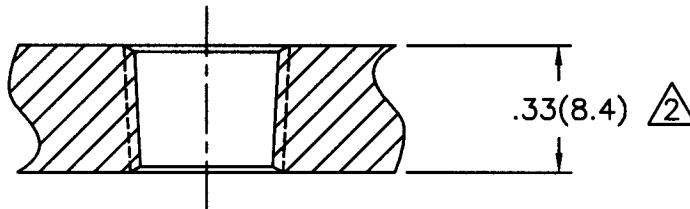
4741	APPLICATION			REVISIONS				
	NEXT ASS'Y	USED ON	VAR	REV	DESCRIPTION	ECN	DATE	APP'D
				E	REVISED PER ECR	17898	7/8/03	DM1/5

**Related Drawing**  
No modifications permitted without the approval of the authorized person



**MOUNTING HOLE PREPARATION:**

DRILL  $\phi .343(\phi 8.71)$   
THRU  
TAP 1/8-27 NPT  
THRU



$\triangle 2$  ABOVE INSTALLATION IS FOR WALL THICKNESS OF .33(8.4).  $\square$   $\phi .750(\phi 19.05)$  FOR THICKER WALLS TO CLEAR 7/16(11.11) HEX SOCKET WRENCH.

$\triangle 1$  RECOMMENDED MOUNTING TORQUE ON 7/16(11.11) HEX 5 FOOT POUNDS (7 NEWTON METERS).

UNLESS SPECIFIED TOLERANCES		DRAWN	ECB	7/8/03	MFG	PZL	7/25/03	 3425 WALDEN AVE. DEPEW, NY 14043 (716) 684-0001 EMAIL: SALES@PCB.COM		
DIMENSIONS IN INCHES	DIMENSIONS IN MILLIMETERS [IN BRACKETS]	CHK'D	esm	7/25/03	ENGR	RF	7/24/03			
DECIMALS XX $\pm .01$ XXX $\pm .005$	DECIMALS X $\pm 0.3$ XX $\pm 0.13$	APP'D	DM1/5	7/25/03	SALES	Jmm	7/25/03	CODE IDENT. NO.	52681	
ANGLES $\pm 2$ DEGREES	ANGLES $\pm 2$ DEGREES	TITLE					INSTALLATION DRAWING MODEL 102M206 PRESSURE SENSOR		DWG. NO.	4741
FILLETS AND RADII .003 - .005	FILLETS AND RADII [0.07 - .013]	DD011 REV. C 01/21/03					SCALE: 2X		SHEET 1 OF 1	