

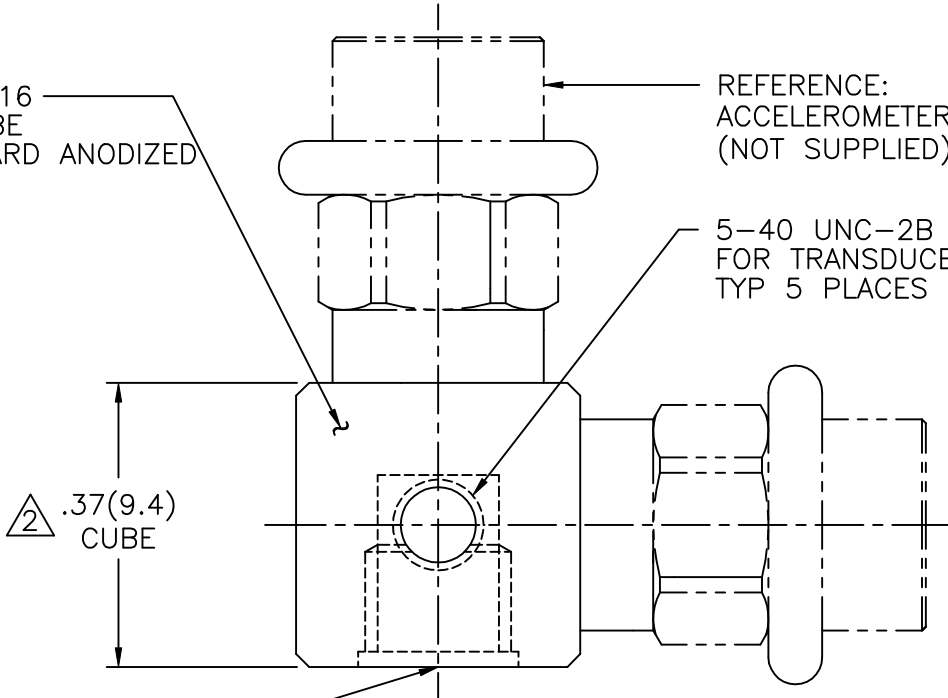
| | | | | | | | |
|-------------|---------|-----|-----------|-------------|-----|------|-------|
| APPLICATION | | | REVISIONS | | | | |
| NEXT ASS'Y | USED ON | VAR | REV | DESCRIPTION | ECN | DATE | APP'D |
| | | | | | | | |

2272

MODEL 080B16
 TRIAXIAL CUBE
 MATERIAL: HARD ANODIZED
 ALUMINUM
 (SUPPLIED)

REFERENCE:
 ACCELEROMETERS
 (NOT SUPPLIED)

5-40 UNC-2B THD
 FOR TRANSDUCER MOUNTING
 TYP 5 PLACES



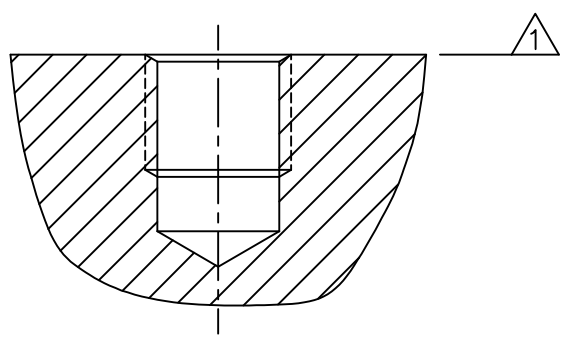
10-32 UNF-2B THD
 X .15(3.8) ∇

.28(7.1)

MODEL 081B05
 MOUNTING STUD
 10-32 UNF-2A
 TYP EACH END
 MATERIAL: BeCu
 (SUPPLIED)

MOUNTING HOLE PREPARATION

DRILL ϕ .159(ϕ 4.04)
 X .23(5.8) ∇ MIN.
 TAP 10-32 UNF-2B
 X .15(3.8) ∇ MIN.



∇ 2 RECOMMENDED MOUNTING ON .37(9.4) CUBE 10-20 INCH POUNDS
 (113-225 NEWTON CENTIMETERS).

∇ 1 MOUNTING SURFACE MUST BE FLAT WITHIN .001(0.03) TIR OVER ϕ .562(ϕ 14.27) WITH A
 MINIMUM 63/(1.6) FINISH FOR BEST RESULTS.

| | | | | | | |
|---|---|---|--|------|-----------------------------|--|
| UNLESS SPECIFIED TOLERANCES | | DRAWN | | MFG | | PCB PIEZOTRONICS, INC. 3425 WALDEN AVE. DEPEW, NEW YORK 14043 PHONE: (716) 684-0001 |
| DIMENSIONS IN INCHES | DIMENSIONS IN MILLIMETERS (IN PARENTHESIS) | CHK'D | | ENGR | | |
| DECIMALS XX \pm .01 XXX \pm .005 ANGLES \pm 2 DEGREES | DECIMALS XX \pm 0.3 XXX \pm 0.13 ANGLES \pm 2 DEGREES | APP'D | | | | |
| FILLETS AND RADII .003 - .005 | FILLETS AND RADII (0.07 - 0.13) | TITLE | | | CODE IDENT. NO. 52681 | DWG. NO. 2272 |
| DD011 REV. NR 10/25/94 | | INSTALLATION DRAWING MODEL 080B16 TRIAxIAL CUBE | | | SCALE: 4X | SHEET 1 OF 1 |