

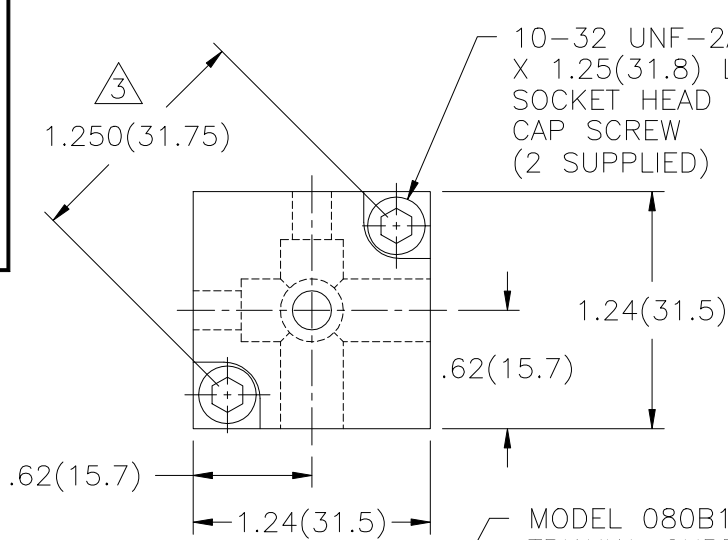
2260

APPLICATION

| | | |
|------------|---------|-----|
| NEXT ASS'Y | USED ON | VAR |
|------------|---------|-----|

REVISIONS

| REV | DESCRIPTION | ECN | DATE | APP'D |
|-----|-------------|-----|------|-------|
|-----|-------------|-----|------|-------|

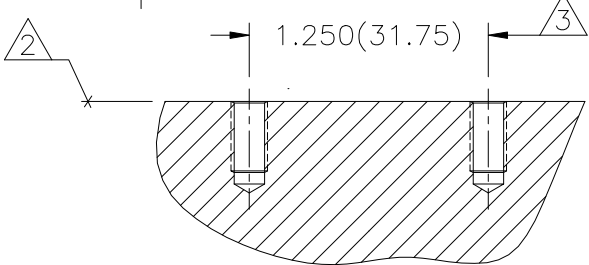
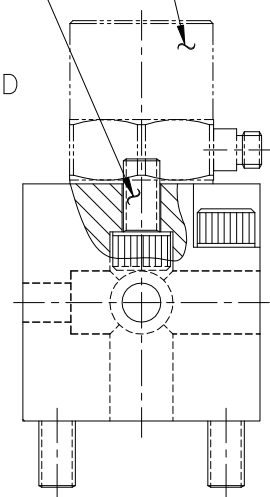
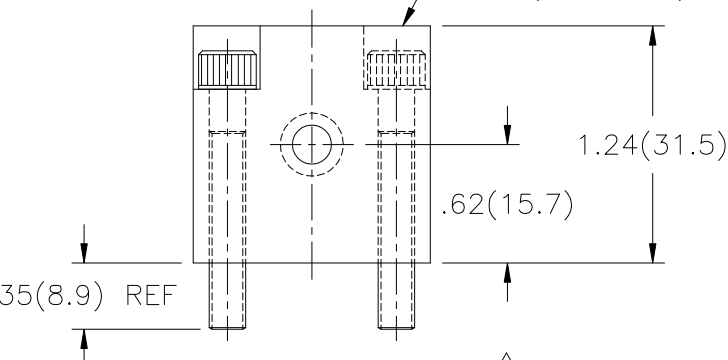


10-32 UNF-2A ⁴
X 1.25(31.8) LONG
SOCKET HEAD
CAP SCREW
(2 SUPPLIED)

10-32 UNF-2A ⁴
X .38(9.7) LONG
SOCKET HEAD
CAP SCREW
(3 SUPPLIED)

REFERENCE:
ACCELEROMETER
(NOT SUPPLIED)

MODEL 080B11
TRIAxIAL CUBE
MATERIAL: HARD ANODIZED
ALUMINUM
(SUPPLIED)



MOUNTING HOLE PREPARATION:

DRILL $\phi .159(\phi 4.04)$ ¹
X $.43(10.9) \nabla$ MIN.
TAP 10-32 UNF-2B
X $.37(9.4) \nabla$ MIN.
TYP 2 PLACES AS SHOWN

- ⁴ RECOMMENDED MOUNTING TORQUE ON HEX 10-20 INCH POUNDS (113-225 NEWTON CENTIMETERS).
- ³ DIAGONAL MOUNTING DIMENSION BETWEEN MOUNTING HOLES.
- ² MOUNTING SURFACE SHOULD BE FLAT TO WITHIN $.001(0.03)$ TIR OVER $\phi 1.750(\phi 44.45)$ WITH A MINIMUM $63\sqrt{(1.6\sqrt{)}}$ FINISH FOR BEST RESULTS.
- ¹ DRILL PERPENDICULAR TO MOUNTING SURFACE TO WITHIN $\pm 1^\circ$.

| | | | | | | |
|---|--|---|--|------|--|--|
| UNLESS SPECIFIED TOLERANCES | | DRAWN | | MFG | | PCB PIEZOTRONICS, INC. 3425 WALDEN AVE. DEPEW, NEW YORK 14043 PHONE: (716) 684-0001 |
| DIMENSIONS IN INCHES | DIMENSIONS IN MILLIMETERS (IN PARENTHESIS) | CHK'D | | ENGR | | |
| DECIMALS XX $\pm .01$ XXX $\pm .005$ | DECIMALS XX ± 0.3 XXX ± 0.13 | APP'D | | | | |
| ANGLES ± 2 DEGREES | ANGLES ± 2 DEGREES | TITLE | | | | CODE IDENT. NO. |
| FILLET AND RADII .003 - .005 | FILLET AND RADII (0.07 - 0.13) | INSTALLATION DRAWING MODEL 080B11 TRIAxIAL CUBE | | | | DWG. NO. 2260 |
| DD011 REV. NR 10/25/94 | | | | | | SCALE: FULL SHEET 1 OF 1 |